

An aerial photograph of a large offshore oil rig in the middle of a blue sea under a blue sky with white clouds. The rig has several tall, black and red lattice towers. A red and white support vessel is positioned near the rig. The image is partially covered by a dark blue diagonal shape on the left side.

# JUN ENGINEERING

A Leader of Shipbuilding/Offshore plant,  
Offshore Renewable Energy Industry

[www.jun-eng.kr](http://www.jun-eng.kr)





CEO *Hyeon Jin, Jeon*

**We will create a new wave as a leader in the maritime industry.**

Present CEO of JUN ENGINEERING Co.

SPP shipbuilding Co. Shipbuilding Electric Outfitting Design Section manager

Samsung Heavy Industries Co. Marine Design Division

Present Vice Chairman of Gyeongnam Innovation and Startup Association Prior Work History

2019 Awarded Commendation from Ministry of SMEs & Startups (MSS)

2022 Awarded Commendation from Ministry of SMEs & Startups (MSS)

2022 Minister of Science and ICT Award (Software Industry Development Distinguished Service)

2024 Gyeongsangnam-do Outstanding Investment Company Commendation

2024 Minister of Trade, Industry, and Energy Award for Contributions to Industrial Digital Transformation







---

## *We work*

JUN ENGINEERING Co., is leading an innovation in the maritime industry by specializing in ship and offshore structure design, software development for the digitalization of the shipbuilding sector, 3D-printed ship model, and the automated manufacturing system development based on advanced offshore engineering technologies.

Furthermore, leveraging the limitless potential of the ocean, we are expanding our business into offshore wind power design and manufacture, securing a competitive edge in the renewable energy sector.

With a vision of global expansion, we are building a network with over 80 global shipbuilding companies in domestic and international marine enterprises, fostering sustainable growth and continuous technological innovation.

By combining digital technology and eco-friendly energy solutions, we are driving a paradigm shift in the shipbuilding and maritime industry, setting new standards for the future.

# History

**2017~2018**

## Established JUN ENGINEERING

- 17.06** Established JUN ENGINEERING
- 09** Certified as venture business
- 11** Registered as a member of Korea International Trade Association
- 18.01** Established company research institute

**2020~2021**

## Selected as technologically innovative business

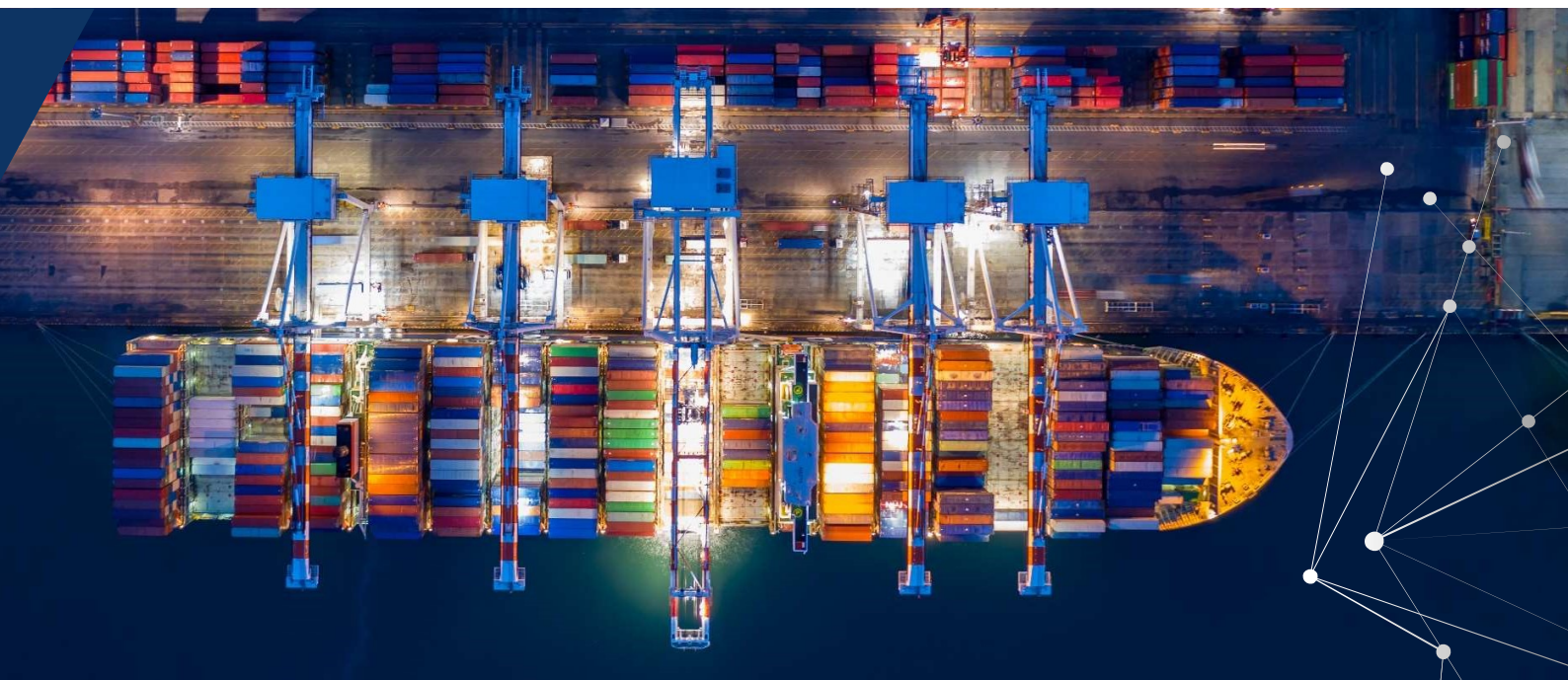
- 20.01** Established Ulsan Branch
- 07** Registration of a defense venture agreement company
- 08** INNOBIZ Certification
- 21.12** Selected as a 'Business Reorganization Plan Approved Company' by the Ministry of Trade, Industry and Energy

**2019**

## Legal Entity Conversion

- 01** K-shipbuilding Co., Ltd partner registration
- 03** Established Busan Branch
- 07** Obtained ISO9001:2015, ISO14001:2015
- 12** JUN ENGINEERING Co., Ltd. Legal Entity Conversion
- 12** Awarded Commendation from Ministry of SMEs & Startups
- 12** Certified as Family-friendly Company





**2023~**

## Preparation for entry into the manufacturing industry

- 23.04** Selected as a Root company
- 05** Selected as a Strong Small Business by the Ministry of Employment and Labor
- 07** Selected as a Gyeongsangnam-do Employment Excellent Company
- 24.09** Excellent Investment Company in Gyeongsangnam-do Governor's Commendation
- 12** Minister of Trade, Industry, and Energy Award for Industrial Digital Transformation
- 25.01** Hanwha Ocean Co., Ltd partner registration

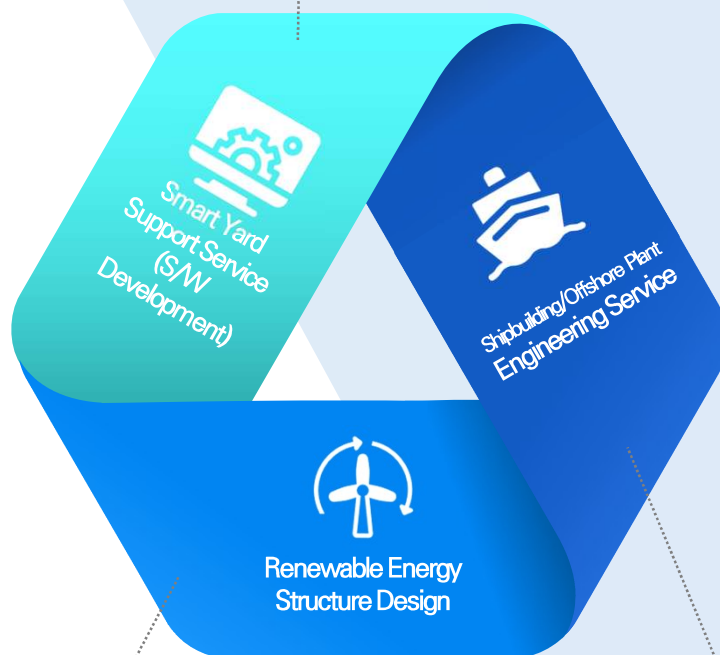
**2022**

## Entering the renewable energy business

- 07** Gyeongnam Youth Friendly Business Certification
- 09** Hyundai Engineering & Steel Industries Co., Ltd partner registration
- 10** Selected by the Ministry of Trade, Industry and Energy as 'National 1000 Innovative Companies'  
Awarded Commendation from Ministry of SMEs & Startups
- 12** Minister of Science and ICT Award

# Company Vision

We develop SW for the shipbuilding industry, contributing to competitiveness in cost and order system through the digital transformation for shipyards.



We implement ESG management by performing engineering and manufacturing tasks for various renewable energy facilities, such as offshore wind power.

We prioritize cost reduction and productivity improvement by providing customized drawings and information, aiming for mutual growth with our customers.





# Mission



## Trust Management

Company that practice process compliance and quality satisfaction by prioritizing customer's promise.



## Challenging Spirit

Company that seeks everyone's development with the belief of success through endless challenges of passion and ambition.



## Creative Management

Company that provides foundation to demonstrate each employee's competence and creates values based on it.



## Vision Management

Company that develops together by being faithful to the present and predicting future.

# Business Area



Shipbuilding &  
Offshore plant Design



Offshore Wind Power  
Substructure  
Design & Manufacturing



Material Package  
Supply to Shipyards  
(Purchasing & Delivery)



Automation  
manufacturing solution



Shipbuilding Software  
/Application



3D Printing service  
including ship model  
production



# Certification



# Intellectual Property

No.	Division	Status	Intellectual Property Name	App/Reg Num.
1	Patent	Registration	How to measure cable length on a ship	10-2158077
2	Patent	Registration	How to set the optimal route for ship cables and the program to do it	10-2223385
3	Patent	Registration	Optimal route setting system for ship cables	10-2236536
4	Patent	Registration	Automated Bending and Welding System	10-2376359
5	Patent	Registration	3D Information providing ship work management system	10-2672954
6	Patent	Registration	Automated Pipe Spool CAM Data Conversion System	10-2723535
7	Patent	Registration	Automated Pipe Spool Manufacturing System	10-2733760
8	Patent	Registration	Automated Drawing Component Information Retrieval System	10-2755698



---

# Design

## Shipbuilding & Offshore plant

JUN ENGINEERING Co., provides various high-valued ships which are getting more important for the eco-friendly future. With our confidence in cost reduction and the quality of drawings, we have built trust with our customers.

We will become a partner that prioritizes accurate and fast delivery by pursuing the maximization of customer satisfaction in shipbuilding and offshore plant design.

Since its establishment in 2017,  
JUN ENGINEERING Co., has carried out design projects  
for various shipbuilders both in domestic and abroad.  
We are strengthening our technical expertise and contributing to the  
development of the shipbuilding and offshore plant industry.





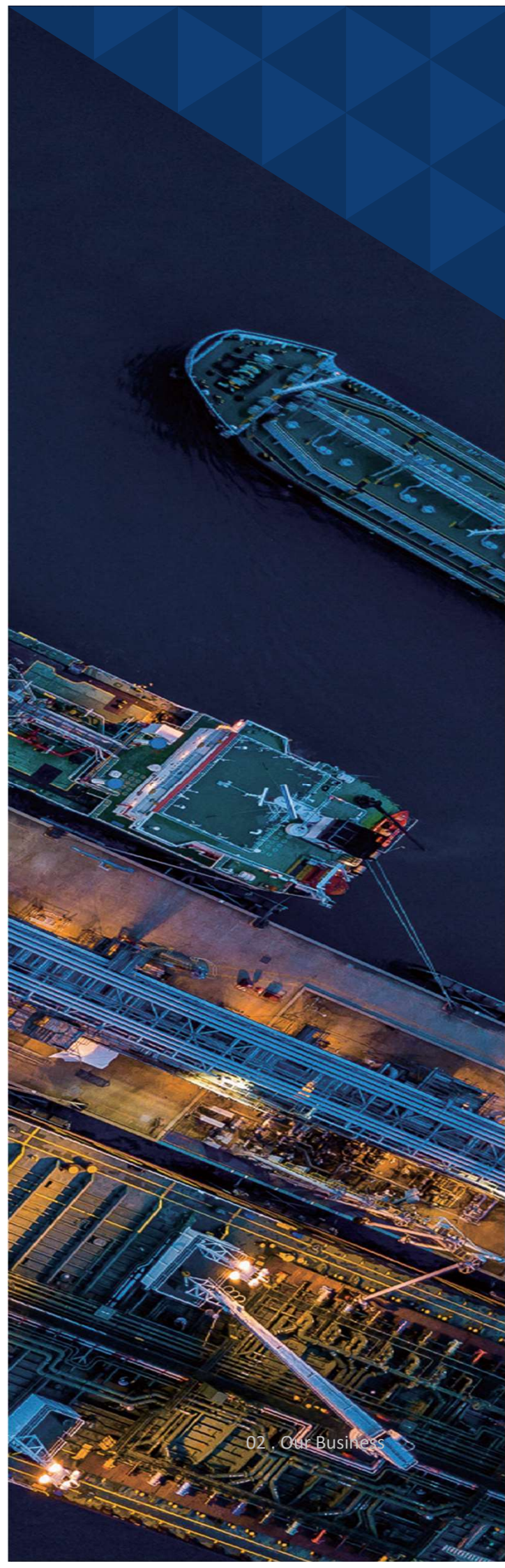


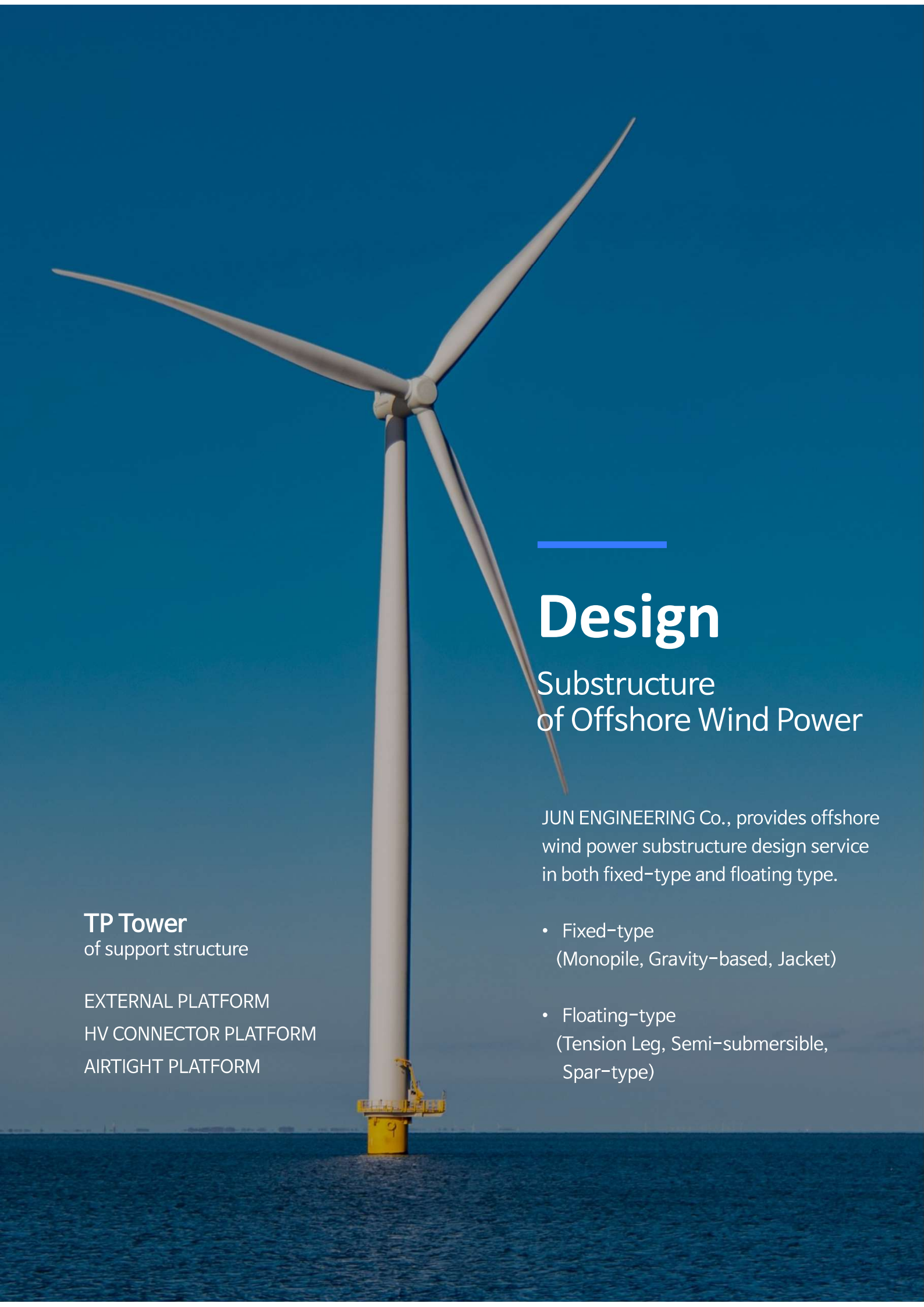
## Design Areas

- LNG Carrier
- Methanol Propulsion Ship
- Hydrogen-powered Ship
- Electric Propulsion Ship
- Tanker (Crude Oil Tanker, Product Carrier, Chemical Tanker)
- Container Ship (1700TEU, 2500TEU, 3600TEU, Etc.)
- Offshore Plant (Platform, Drill Ship, FPSO & FSU, Jack-up Rig, Semi Submersible Rig)
- Offshore Supply Vessels(AHTS)
- Small vessels and special purpose vessels (fisheries mapping vessels, fisheries science survey vessels, coast guard patrol vessels, barges, spill containment vessels, coastal passenger vessels, etc.)
- Bulk Carrier (35K, 59K, 82K, 170K, Etc.)

## Design drawing

- Model Test
- Calculation
- General Arrangement
- POS
- Basic & Detail Drawing
- Production Drawing
- Standard Drawing





**TP Tower**  
of support structure

EXTERNAL PLATFORM  
HV CONNECTOR PLATFORM  
AIRTIGHT PLATFORM

---

# Design

## Substructure of Offshore Wind Power

JUN ENGINEERING Co., provides offshore wind power substructure design service in both fixed-type and floating type.

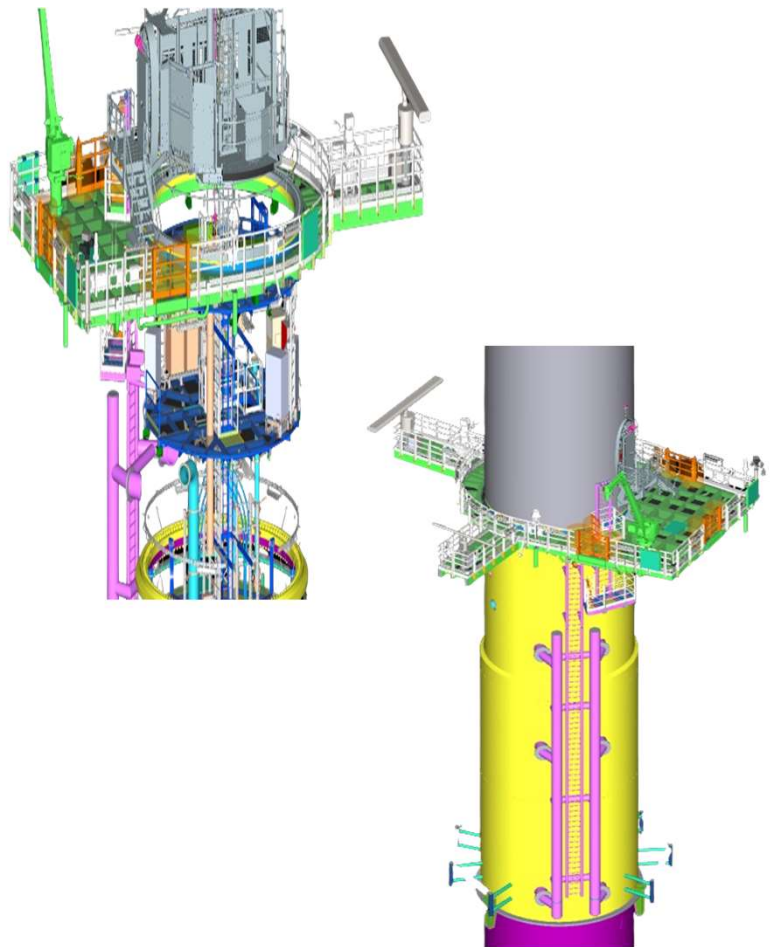
- Fixed-type  
(Monopile, Gravity-based, Jacket)
- Floating-type  
(Tension Leg, Semi-submersible, Spar-type)



## Cooperative company



SAMSUNG HEAVY INDUSTRIES



- What We Do
  - Design and Structural Calculation in Offshore Wind Power Substructure
  - Design Vessels for installation of Offshore Wind Power (CTV (Crew Transfer Vessel), WTIV (Wind Turbine Installation Vessel), etc.)

We have participated as an engineering specialist for the substructure fabrication/installation and turbine installation in the Jeonnam-Jaeun Offshore Wind Power Phase 1 100MW project development of Hyundai Steel Industries.

# Manufacturing

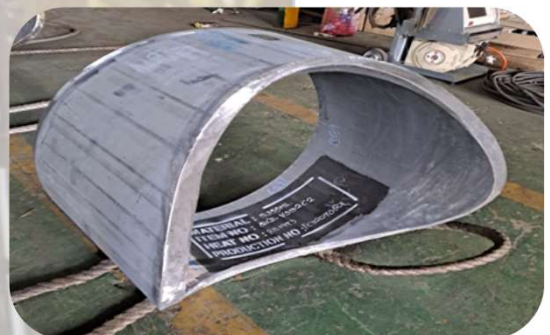
## Substructure of Offshore Wind Power



We manufacture offshore wind power substructure in our own factory.

- The Process of the Manufacturing

1. Material Inspection
2. Machining (Costa)
3. Welding (Pipe Joint)
4. Product Inspection
5. Shipment





## # Offshore Wind Power Substructure Processing Factory

JUN ENGINEERING Co., explored business of offshore wind power substructure processing based on knowledge and ability to design renewable energy structures.



## PROCESS





# Supply Items



## Machinery Part

- Main Engine
- Diesel Generator Engine
- Boiler
- Fuel Oil Supply Unit
- M.E.J.C.F.W Pre heater
- Sewage Treatment sys
- E/R crane
- Auto Filter
- MGO Chiller
- Dumping Condenser
- Plate Cooler
- Air Compressor
- Fire Fighting sys (CO2, Water)
- Centrifugal / Gear Pump
- Compensator
- Fresh Water Generator
- Air Reservoir
- Control Air Dryer
- Purifier
- Oil Bilge Separator
- Sterilizer
- Calorifier
- Mineralizer

## Hull Part

- Propeller & Shaft
- Stern Tube Seal, Bearing
- Rudder
- Steering Gear
- Accommodaion ladder
- Ballast Water Treatment sys.
- Remote level d draft gauging sys.
- Valve Remote Control sys.
- Bow Thruster
- Deck Machinery
- Lifeboat
- Life Raft
- Provision Crane
- I.C.C.P, M.G.P.S.
- Anchor & Anchor Chain
- Hatch Cover
- Anti Heeling sys.
- Eductor
- Cargo Hold Vent. Fan
- Watertight Door

## Electric Part

- Main Switchboard & Panel
- Navigation sys.
- Engine Control Console (ECC)
- Bridge Control Console (BCC)
- Bridge Wing Console
- Chart Console
- Fire Detection & Alarm sys
- Reefer container Monitoring sys.
- Lighting Fixtures
- Magnetic Compass
- Electronic Chart Display
- Conning Display
- Electrical Cable





## Accommodation Part

- Gallery Equipment
- Laundry Equipment
- Window incl. Wiper
- Clear View Screen
- Carpet, Curtain
- Provision Refrigeration Plant
- Catering Furniture
- Ventilation Fan
- Air Conditioning sys.
- Crew Elevator
- Unit Toilet
- Refrigerated Provision Store
- Fire extinguishing sys for deep fat fryer
- Deck covering (Wall, Mat, Tile)
- Cabin Door
- Cabin Furniture
- Steel Door
- Stell Furniture

## Fitting & Bulk & Valve Part

- Bolt&Nut, U-Bolt&Nut
- Gasket, Oring/Rubber
- Fitting, Elbow, Clamp, Flange
- Rope, Safety Wire
- Reducing and Regulating Valve
- Sight Glasses, Steam Trap
- Silencer & Thermometer
- Pressure Gauge, Cable Gland
- Heating Coil
- Insulation material
- Air Vent Head, Louver
- Hose Valve
- Temperature Control Valve
- Name Plate, Ship model
- Butterfly Valve
- 2/3 Way Ball Valve
- Flap Check Valve
- Expansion Joint, Strainer
- EmcyShutoff Valve
- Safety (Relief) Valve

## Steel Outfitting / Forging, Casting item Part

- Pipe Spool / Support
- Hand Grip / Handrail
- Manhole
- Vertical Ladder
- Bell Mouth
- Radar Master (Fore)
- Portable Tank
- Bottom Plug
- Mooring Chock
- Spiral Duct
- Cable tray
- Propeller Shaft
- Engine) Turbo Charger
- Engine) Piston Crown & Rod
- Engine) Cylinder Cover
- Engine) Valve Spindle
- Engine) Mounting Tool

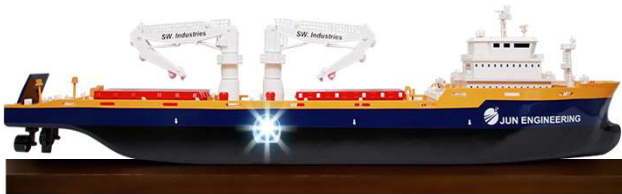


# 3D Printing



3D PROCEAN is the name of Jun Engineering's 3D printing output agency service, which is capable of modeling various fields like the vast D ocean and working on the entire 3D printing process.

## Cargo Ship



2010\*300\*500 mm / 22 kg / PLA / RESIN

! Beam Projector Mounted Type

## LNG Ship



2010\*354\*520 mm / 45 kg / PLA / RESIN

! Cutaway Type

## Car Ferry



1000\*285\*168 mm / 15 kg / PLA / RESIN

! Acrylic windows

## Drill Ship



1500\*683\*274 mm / 42 kg / PLA / RESIN

## War Ship



1493\*384\*363 mm / 38 kg / PLA / RESIN

## Passenger Ship



800\*172\*260 mm / 4.0 kg / PLA / RESIN

---

# Software

Innovative SW for the  
Smart Shipbuilding industry



## MARINOS - SERIES

'MARINOS' is a SW of 'AIoT + Quantity Analysis Management' for small and medium-sized shipbuilders.

It is a customized solution utilizing engineering data from over 20 years of shipbuilding experiences by AI machine learning.

- **MARINOS Cable**
  - Cable auto-measurement program for the optimal routed design and quantity management.
- **MARINOS Outfitting**
  - Material management program for optimized process of managing purchase orders.
- **MARINOS 3D Solution**
  - 3D work guiding program to assist the installation of machinery for on-site workers.



**MARINOS**  
Cable



**MARINOS**  
Outfitting



**MARINOS**  
3D Solution



#### Headquarter

510, 22, Manggyeongnam-gil 44beon-gil, Jinju-si, Gyeongsangnam-do,  
Republic of Korea (Jinju Knowledge Industry Center)

#### Main Factory

Aerospace Industrial Complex District A4-6, Jeongchon-myeon, Jinju-si,  
Gyeongsangnam-do, Republic of Korea

#### Branch 1

A506, 79-10, Techno saneop-ro 55beon-gil, Nam-gu, Ulsan, Republic of Korea

#### Branch 2

99 Centum-dong-ro, Haeundae-gu, Busan, Republic of Korea  
(Buksan E Centum Class Center No.1307)

T +82-55-761-0634 / 0635

E juneng0214@gmail.com

juneng0214@naver.com