

# INNOSTEEL



## CONTACT US

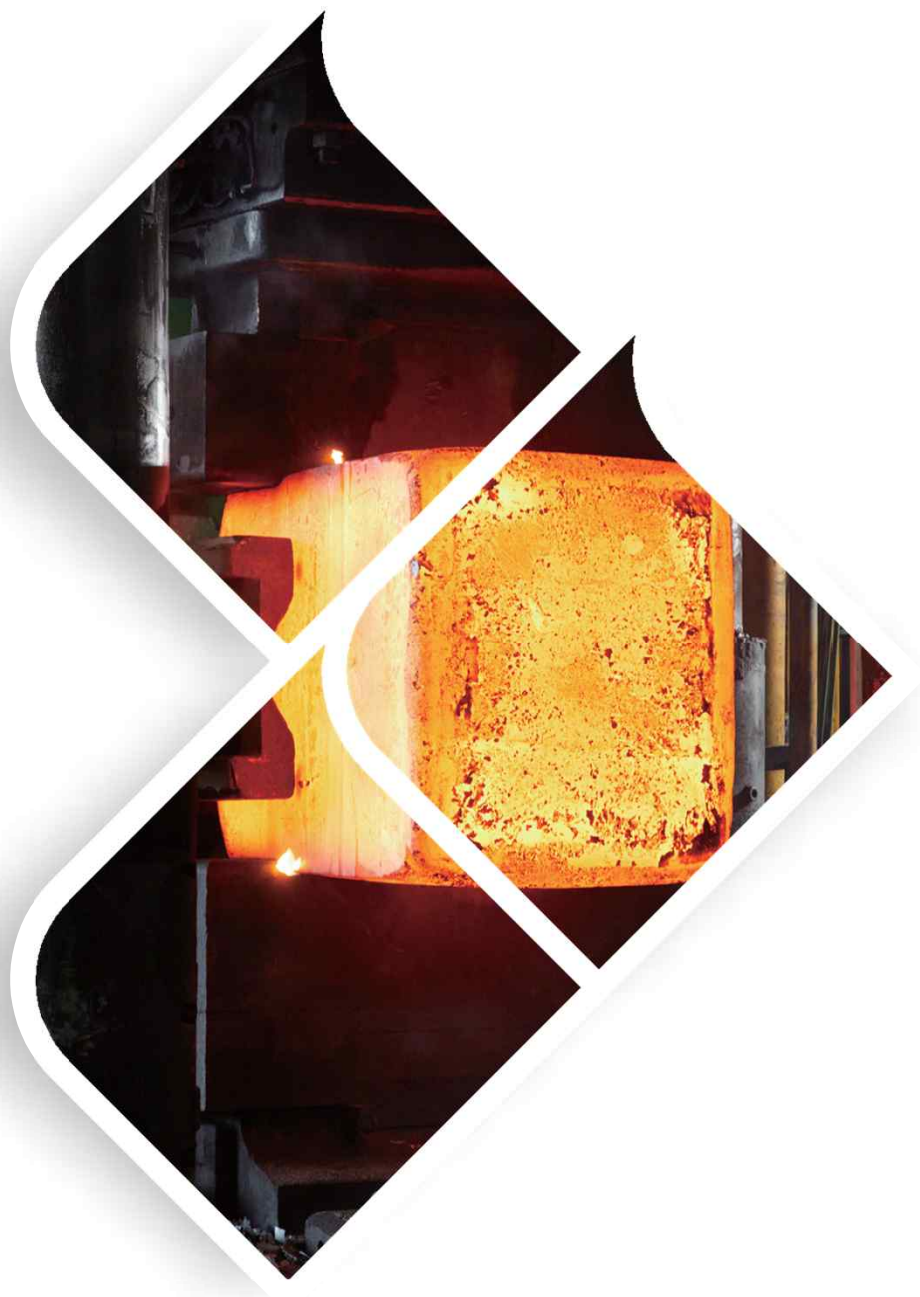
Innosteel Co.,Ltd.

82-55-342-3656(Extension 1: Management Dept, 2: Sales Dept, 3: QA 4: Production Dept)

82-55-342-3681(Sales Dept) 82-55-342-3682(Production Dept)

65, Angok-ro 333beon-gil, Hallim-myeon, Gimhae-si, Gyeongsangnam-do, Republic of Korea, 50852





**INNO  
STEEL**

<http://innosteel.kr>

# CONTENT

1	CEO Massage	01
2	Company introduction	02
3	Brief History	03
4	Corporate value. corporate goal	04
5	SMART+system (Product delivery guarantee system)	05
6	Quality Management System 5P+A	06
7	Manufacturing Process	07
8	Main Products.	
	Ship Engine Part	08
	Industrial Machinery	08-1
	Nuclear Power Generation Facilities	08-2
	(Wind Power Equipment parts)	
9	Manufacture Facilities	09
10	Inspection Equipment	10
11	Certificate	11

# CEO Message

Since its establishment in 1996, it has been producing large ship engine parts, petrochemical plant parts, industrial machinery parts, nuclear power generation, and high-pressure forging valve used for thermal power generation. We are doing our best to become a leader in the forging industry based on this high-quality production technology .

With constant technological development and rapid introduction of advanced technologies, we are expanding our business to various fields such as shipbuilding, plants, wind power, and industrial equipment. It is the only policy for companies that do their best with firm and unwavering beliefs that put customers and quality first to keep their promises with customers.

Under the values of dream, future, and happiness, all employees of Innosteel Co., Ltd pledge to strive to become the best and more effective company in their respective fields. In addition, we will strive to become a dynamic and future-oriented company that adapts to rapidly changing markets. We meet the needs of our customers more quickly and appropriately than any other company.

---

CEO of Innosteel Co., Ltd.  
Kim Woo Seok  
Yoon Jin A

# COMPANY INTRODUCTION

---

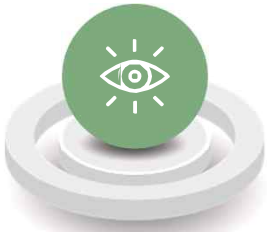
From petrochemical plant parts to industrial machinery parts, large ship engine parts, and nuclear/thermal power generation parts, Innosteel Co., Ltd. has been producing products with the best efforts to meet customer needs with the latest facilities, and we are creating a company that does its best with a firm and unwavering belief that puts customer quality first.

By thinking about the future environment (Eco) and complying with governance, Innosteel Co., Ltd. will have corporate social responsibility (CSR) and meet the needs of customers more quickly and appropriately than any other company.

# BRIEF HISTORY

- **1996** Established as Gyeongseong Co., Ltd
- **2001** Installed a 1500-ton press
- **2005** ISO9001/20000 certification obtained
- **2006** Installed of 2500 tons of press
- **2007** Renamed Dasan Materials Co., Ltd  
Additional supply of Hyundai Heavy Industries (PROPELLER SHAFT, PISTON ROD)  
STX ENPACO (Piston Rod, Cylinder Cover) Registration/Supply  
hyundai-rotem(MAIN GEAR, ADJSUT SCREW, PINION, MAIN SHAFT, ...)
- **2008** ISO14001 / 18001 certification obtained  
Hyundai WIA company registration and PRESS parts supply Registration/Supply
- **2010** Urim Machinery (Industrial Engine Parts Supply – GEAR, PINION)
- **2012** Forging Valve Supply – Domestic, Overseas (VELAN), ICL (PK VALVE)  
Samsin Co., Ltd. (supplied nuclear power & thermal forging valve)
- **2013** Renamed Innosteel Co., Ltd.
- **2020** Certification of companies specializing in root technology
- **2021** Bring in Smart Factory (MES)
- **2023** Certification of companies specializing in materials, parts and equipment)
- **2024** Certification of establishment of a department dedicated to R&D

# CORPORATE VALUE



## VISION

Let's do create a company where executives and employees are happy by achieving 100 million dollar in sales.



## MISSION

As a company, let's become a company that contributes to society by making better products with corporate social responsibility (CSR).

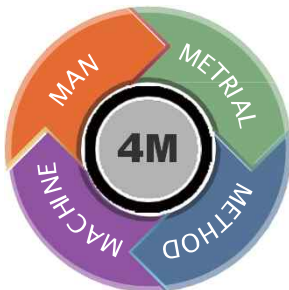


## SLOGAN

Let's do Produce the best products with the best equipment, best materials, and best people.

# CORPORATE GOAL

## OPTIMIZATION OF 4M



## DELIVERY DATE COMPLIANCE



## EXPANDING ECO FRIENDLINESS



## GOVERNANCE COMPLIANCE



# SMART+SYSTEM

(PRODUCT DELIVERY GUARANTEE SYSTEM)



## SPECIFIC DESIGN PLAN

We check our customer needs

## MONITORING

Provides continuous monitoring of progress.

## ACHIEVE CUSTOMER SATISFACTION

We will Achieve customer satisfaction through strict quality control.

## REALISTIC PARTNER

When choosing a customer's goal, we can be your Realistic partner.

## TIME

Based on the customer's trust, we ship the product on the exact Time delivery date.

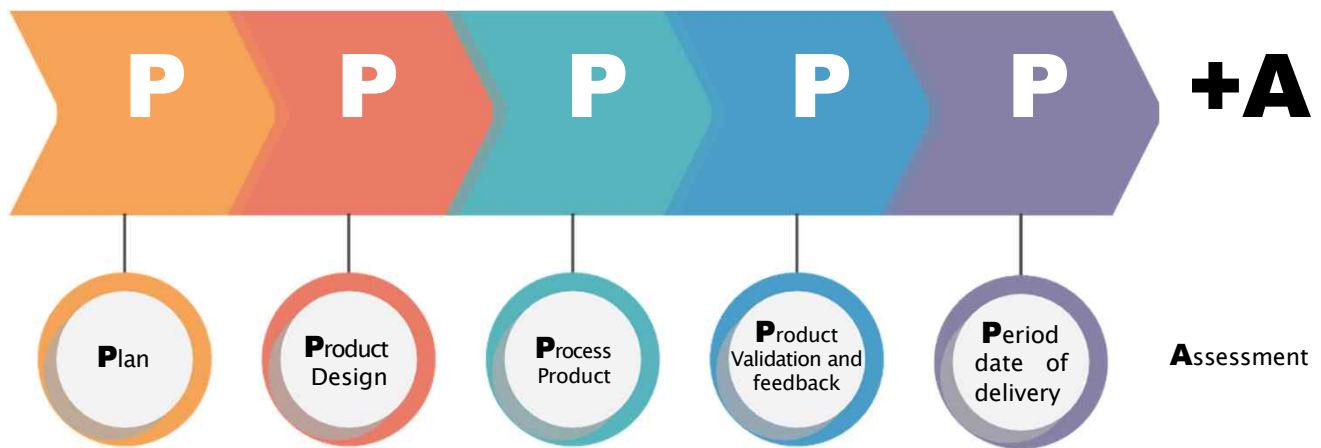
## ASSESSMENT

A comprehensive final inspection process



# QUALITY MANAGEMENT

## SYSTEM 5P+A



We continue to communicate with customers and consider product quality as our top priority.

We guarantee perfect quality through strict **5P+A** quality control.

### PLAN

Check customer needs

### PRODUCT DESIGN

Check program simulation

### PROCESS PRODUCT

Product manufacturing process

### PRODUCT VERIFICATION

Evaluation of product design

### PERIOD DATE OF DELIVERY

Confirmation of the exact delivery date

### ASSESSMENT

A comprehensive final inspection process

# MANUFACTURING PROCESS

Raw Material



Cutting



Heating



Machining



Normalizing Heat treatment



Forging



QT Heat Treatment



Inspection(UT,MT)



## Products List1

### Ship Engine Parts



**Rudder Stock**



**Drive Shaft**



**GearWheel**



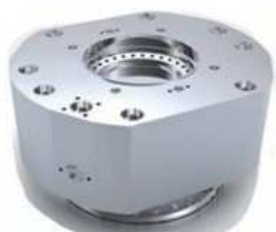
**Propeller Shaft**



**Intermediate Shaft**



**Piston Rod**



**Cylinder Cover**



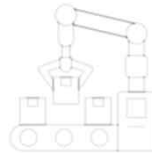
**Piston Crown**



**Cross Head Pin**

## Products List2

### Industrial Machinery Parts



**PIPE**



**Flanged Shaft**



**Bit**



**Roller**



**Table Roller**



**CrankShaft**



**Hook**



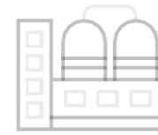
**Workroll**



**Wheel**

### Products List3

#### Nuclear Power Generation Facilities



VALVE



Y-TYPE VALVE



Forged Shell



BONNET



VALVE

### Products List4

#### Wind Power Equipment Parts



# MANUFACTURE FACILITIES

09



Forklift+Manipulator



Forklift



Heat treating furnace



heating



1500 TON PRESS



2500 TON PRESS



3500 TON PRESS

EQUIPMENT	CAPABILITY	QUANTITY	EQUIPMENT	CAPABILITY	EQUIPMENT
HEATING FURNACE	50TON	4	CRANE	30TON	2
	30TON	1		20TON	1
	80TON	1		15TON	1
HEAT TREATMENT FURNACE	60TON	2		10TON	5
OIL HYDRAULIC PRESS	2500TON	1		5TON	1
	1500TON	1	FORKLIFT	42TON	1
	3500TON	1		25TON	3
BAND SAW	650MM	2		18TON	2
	500MM	1		16TON	1
	1200MM	1		15TON	1
	900MM	3		10TON	1

# INSPECTION EQUIPMENT



**universal Tester**



**Scientific  
component analyzer**



**Charpy impact Tester**



**Brinell hardness  
Tester**



**PMI Equipment**



**microscope**



**Marking Machine**



**Grinding M/C  
for test Piece**



**Hardness Tester**

# CERTIFICATE



 <b>CERTIFICATE OF APPROVAL OF MANUFACTURERS OF MATERIALS</b> IN: <b>FABBRICAZIONE</b>	
<p>This is to certify that the manufacturing of the material described below is in conformity with the specific requirements of the RINA factory for the approval of Manufacturers of Materials.</p>	
<b>Designation</b> <b>Type</b>	<b>Steel forgings for machinery</b> (machines and components) steel alloy steel forgings, max. weight 20,000 kg.
<b>Manufacturer</b> <b>Place of manufacture</b>	P.O. BOX 127, C.D. 1, 1710 42, Longobardi, 11010, Italy 11012, Longobardi (Cuneo) (Italy) (Italy)
<b>Approval number</b>	REP/016/87 0016, valid for the approval of manufacturers of materials

Issued at: **MILAN** on **March 15, 1987** (This Certificate is valid until: **March 15, 1989**)

  
**Chief of the Firm**



This certificate consists of this page and 1 additional

[illegible]

<div style="border: 1px solid black; width: 100px; height: 40px; margin: 0 auto; display: flex; align-items: center; justify-content: center;"> <div style="width: 10px; height: 10px; background-color: black; margin-right: 5px;"></div> <div style="font-weight: bold; font-size: 1.2em;">DNV</div> </div>		Certificate No. Approval No. Page 1
<h2 style="margin: 0;">APPROVAL OF MANUFACTURER CERTIFICATE</h2>		
This is to certify: That <b>NINO STEEL CO., LTD.</b> 82 Angkor av. 333Bom-gi, Hatten-myson, 88882 Glenelg avt, Oystingen-gang-dra, Republic of Korea		
is an approved manufacturer of Steel Reinforcement		
in accordance with DNV rules for construction - B300, and the following publications:		
Application was Made on: Paying method Date of issue Next treatment condition	Fingerprint for staffing and machinery Fingerprint for reinforcement Add: See page 2 See page 4	
Manufacture conditions for this certificate have changed to better correspond to EN 10080-1:2007, EN 10080-2:2007, EN 10080-3:2007, EN 10080-4:2007, EN 10080-5:2007, EN 10080-6:2007, EN 10080-7:2007, EN 10080-8:2007, EN 10080-9:2007, EN 10080-10:2007, EN 10080-11:2007, EN 10080-12:2007, EN 10080-13:2007, EN 10080-14:2007, EN 10080-15:2007, EN 10080-16:2007, EN 10080-17:2007, EN 10080-18:2007, EN 10080-19:2007, EN 10080-20:2007, EN 10080-21:2007, EN 10080-22:2007, EN 10080-23:2007, EN 10080-24:2007, EN 10080-25:2007, EN 10080-26:2007, EN 10080-27:2007, EN 10080-28:2007, EN 10080-29:2007, EN 10080-30:2007, EN 10080-31:2007, EN 10080-32:2007, EN 10080-33:2007, EN 10080-34:2007, EN 10080-35:2007, EN 10080-36:2007, EN 10080-37:2007, EN 10080-38:2007, EN 10080-39:2007, EN 10080-40:2007, EN 10080-41:2007, EN 10080-42:2007, EN 10080-43:2007, EN 10080-44:2007, EN 10080-45:2007, EN 10080-46:2007, EN 10080-47:2007, EN 10080-48:2007, EN 10080-49:2007, EN 10080-50:2007, EN 10080-51:2007, EN 10080-52:2007, EN 10080-53:2007, EN 10080-54:2007, EN 10080-55:2007, EN 10080-56:2007, EN 10080-57:2007, EN 10080-58:2007, EN 10080-59:2007, EN 10080-60:2007, EN 10080-61:2007, EN 10080-62:2007, EN 10080-63:2007, EN 10080-64:2007, EN 10080-65:2007, EN 10080-66:2007, EN 10080-67:2007, EN 10080-68:2007, EN 10080-69:2007, EN 10080-70:2007, EN 10080-71:2007, EN 10080-72:2007, EN 10080-73:2007, EN 10080-74:2007, EN 10080-75:2007, EN 10080-76:2007, EN 10080-77:2007, EN 10080-78:2007, EN 10080-79:2007, EN 10080-80:2007, EN 10080-81:2007, EN 10080-82:2007, EN 10080-83:2007, EN 10080-84:2007, EN 10080-85:2007, EN 10080-86:2007, EN 10080-87:2007, EN 10080-88:2007, EN 10080-89:2007, EN 10080-90:2007, EN 10080-91:2007, EN 10080-92:2007, EN 10080-93:2007, EN 10080-94:2007, EN 10080-95:2007, EN 10080-96:2007, EN 10080-97:2007, EN 10080-98:2007, EN 10080-99:2007, EN 10080-100:2007, EN 10080-101:2007, EN 10080-102:2007, EN 10080-103:2007, EN 10080-104:2007, EN 10080-105:2007, EN 10080-106:2007, EN 10080-107:2007, EN 10080-108:2007, EN 10080-109:2007, EN 10080-110:2007, EN 10080-111:2007, EN 10080-112:2007, EN 10080-113:2007, EN 10080-114:2007, EN 10080-115:2007, EN 10080-116:2007, EN 10080-117:2007, EN 10080-118:2007, EN 10080-119:2007, EN 10080-120:2007, EN 10080-121:2007, EN 10080-122:2007, EN 10080-123:2007, EN 10080-124:2007, EN 10080-125:2007, EN 10080-126:2007, EN 10080-127:2007, EN 10080-128:2007, EN 10080-129:2007, EN 10080-130:2007, EN 10080-131:2007, EN 10080-132:2007, EN 10080-133:2007, EN 10080-134:2007, EN 10080-135:2007, EN 10080-136:2007, EN 10080-137:2007, EN 10080-138:2007, EN 10080-139:2007, EN 10080-140:2007, EN 10080-141:2007, EN 10080-142:2007, EN 10080-143:2007, EN 10080-144:2007, EN 10080-145:2007, EN 10080-146:2007, EN 10080-147:2007, EN 10080-148:2007, EN 10080-149:2007, EN 10080-150:2007, EN 10080-151:2007, EN 10080-152:2007, EN 10080-153:2007, EN 10080-154:2007, EN 10080-155:2007, EN 10080-156:2007, EN 10080-157:2007, EN 10080-158:2007, EN 10080-159:2007, EN 10080-160:2007, EN 10080-161:2007, EN 10080-162:2007, EN 10080-163:2007, EN 10080-164:2007, EN 10080-165:2007, EN 10080-166:2007, EN 10080-167:2007, EN 10080-168:2007, EN 10080-169:2007, EN 10080-170:2007, EN 10080-171:2007, EN 10080-172:2007, EN 10080-173:2007, EN 10080-174:2007, EN 10080-175:2007, EN 10080-176:2007, EN 10080-177:2007, EN 10080-178:2007, EN 10080-179:2007, EN 10080-180:2007, EN 10080-181:2007, EN 10080-182:2007, EN 10080-183:2007, EN 10080-184:2007, EN 10080-185:2007, EN 10080-186:2007, EN 10080-187:2007, EN 10080-188:2007, EN 10080-189:2007, EN 10080-190:2007, EN 10080-191:2007, EN 10080-192:2007, EN 10080-193:2007, EN 10080-194:2007, EN 10080-195:2007, EN 10080-196:2007, EN 10080-197:2007, EN 10080-198:2007, EN 10080-199:2007, EN 10080-200:2007, EN 10080-201:2007, EN 10080-202:2007, EN 10080-203:2007, EN 10080-204:2007, EN 10080-205:2007, EN 10080-206:2007, EN 10080-207:2007, EN 10080-208:2007, EN 10080-209:2007, EN 10080-210:2007, EN 10080-21		

[illegible][illegible][illegible][illegible]

 <b>APPROVAL CERTIFICATE FOR MANUFACTURING PROCESS</b>			
<b>Certificate No.</b>	(C)NHS177-0001		
<b>Product</b>	(Shoe) Footwage		
<b>Manufacturer</b>	(HONGSEITEL CO., LTD.)		
<b>Product Address</b>	42, Anjeong 135hae-gil, Haeinsa-ro, Gimcheon, Gyeongangnam-do, 78452 Korea		
<b>Manufacturer Address and E-mail Street Footwage</b>	<table border="0"> <tr> <td> <ul style="list-style-type: none"> <li>1) Foreign address</li> <li>2) Foreign e-mail</li> <li>3) Not applicable</li> </ul> </td> <td> <ul style="list-style-type: none"> <li>4) Tel. No. is an approximate number</li> <li>5) Fax: 02-394-1111</li> <li>6) E-mail: hseitel@hseitel.com, etc.</li> </ul> </td> </tr> </table>	<ul style="list-style-type: none"> <li>1) Foreign address</li> <li>2) Foreign e-mail</li> <li>3) Not applicable</li> </ul>	<ul style="list-style-type: none"> <li>4) Tel. No. is an approximate number</li> <li>5) Fax: 02-394-1111</li> <li>6) E-mail: hseitel@hseitel.com, etc.</li> </ul>
<ul style="list-style-type: none"> <li>1) Foreign address</li> <li>2) Foreign e-mail</li> <li>3) Not applicable</li> </ul>	<ul style="list-style-type: none"> <li>4) Tel. No. is an approximate number</li> <li>5) Fax: 02-394-1111</li> <li>6) E-mail: hseitel@hseitel.com, etc.</li> </ul>		
<b>Approval Condition :</b>	the Manufacturer has to apply for the original manufacturer of this product to the Ministry of the Environment for the approval of the product.		
			
<p><b>THIS IS TO CERTIFY</b> that the manufacturing process for the above mentioned product has been reported in accordance with the relevant requirement of this Society's Rules and/or of the incorporated standards as follows:</p> <p>T. P. 2, C. 1, Sec. 4, Sub. 4, 40% of Rules for the Classification of Shoe Shoes.</p>			
<p>This Certificate is valid until 29th October, 2021          Issued at Gyeongju, Korea on 15th December, 2020</p>			
 <p>For the verification of product authenticity, please scan the QR code and check the product information on the website.</p>	 <p style="text-align: right;"> <b>KOREAN REGISTER</b>    <i>General Manager of</i>  <b>Gyeongju Branch Office</b> </p>		

**MAN Energy Solutions**



***Certificate of Approval***

This is to certify that:

**Inno Steel Co., Ltd.**  
62, Avenue 1, District 1, Hanoi, Vietnam  
Contact information: 0932.74.74.91

is approved by MAN Energy Solutions for the manufacture and supply of:

**Forged Steel Piston Crown**  
**Material: S20C/MoV5**  
**for all engine types, up to 95 Bore**

for MAN B&W engines in two engines in accordance with the Terms and Conditions stated in Appendix A.

issued on 2022-07-24

Signature on 2022-07-24

Certificate No.: 2709-2620-274-9



**MAN Energy Solutions**

  
Crisma Ferreira

  
Sheen Khyah Jilintan

**MAN Energy Solutions**

**Certificate of Approval**

This is to certify that:

**Inno Steel Co., Ltd.**  
62, Jangjeon 1-dong, Jeonju, Jeollabuk-do, Korea  
Korea Registration No. 33-19970, Korea

is approved by MAN Energy Solutions for the manufacture and supply of:

**Forged Steel Piston Rods**  
**Material: S30MnH**  
**for all engine types, up to 90 Bore**

for MAN B&W engines, subject to review in accordance with the Terms and Conditions stated in Appendix A.

Issued on 2020-06-02

Expires on 2025-06-02

Certificate No.: 2776-2020-752-B

**MAN Energy Solutions**

*Signature*  
Gert Knappe  
Gert Knappe, Director

**MAN Energy Solutions**

**Certificate of Approval**

101 Anyang to 210000, Anyang City, Liaoning Province, China

In accordance with

Technical Data Book

Model: 520-210

for all engine speed, 15 to 18.50

with liquid-cooled

**MAN Energy Solutions**

for MAN-USA requires the product of MAN Energy Solutions

Issued on 2020-01-17

Certificate No.: 2700-002-0000

MAN Energy Solutions

*Dong Guo*  
Sales Manager, MAN-USA

**MAN Energy Solutions**

**Certificate of Approval**

This is to certify that

**Inno Steel Co., Ltd.**  
EE, Anglo-Indo-Thai (Pvt) Ltd. (Innovative), Gurgaon-12, Haryana-122002, India

is approved by MAN Energy Solutions for the manufacture and supply of:

**Forged Steel Cylinder Cover**  
**Material: S20CrMoV5 (HB-32)**  
**for all engine types, up to 80 Bore**

for MAN B&W engines now situated in accordance with the Terms and Conditions stated in Appendix A.

Issued on 2016-10-03 expires on 2023-10-03

Certificate no.: 2709-2016-281.1

**MAN Energy Solutions**

*Karl Hoffmann*  
Karl Hoffmann

*Stefan Krieger*  
Stefan Krieger (Joint)

**NIPPON KAUMI KYOKAI**



Approved By: **ETBPC**  
(Certificate No. TM-11000)

**APPROVAL OF MANUFACTURING PROCESS**

*This is to certify that*

**INNO STEEL CO., LTD.**  
62, Anjo-1-103 Higashi-ku, Himeji-shi, Gohoku-ri,  
Hyogo-ken, Japan

*has been approved by the manufacturing process of conventional equipment for the*  
**NIPPON KAUMI KYOKAI** *in accordance with the requirements of* **1.2. Part K of the**  
*Industry's "Standards for the Design and Construction of Steel Pipes" and* **Chapter 4** *and* **Part 1**  
*of the Industry's "Standards for the Approval and Test Approval of Materials and*  
*Equipment for Steel Pipe"*

**MATERIAL:** *Cold-chamber*  
*Cast Alloy Steels*

**PROCESS:** *Forging (Hot Treatment*  
*REMARKS: see the reverse side)*

The products for the above-mentioned by this Society can be manufactured, tested and  
imported in compliance with the Rules.

This certificate is valid from 1st November 2011 until 1st November 2016,  
issued at Tokyo on 30 November 2011.

  
V. Takai  
General Manager  
Material and Equipment Department

**ClassNK**

[illegible]